



## Smart Battery Combox

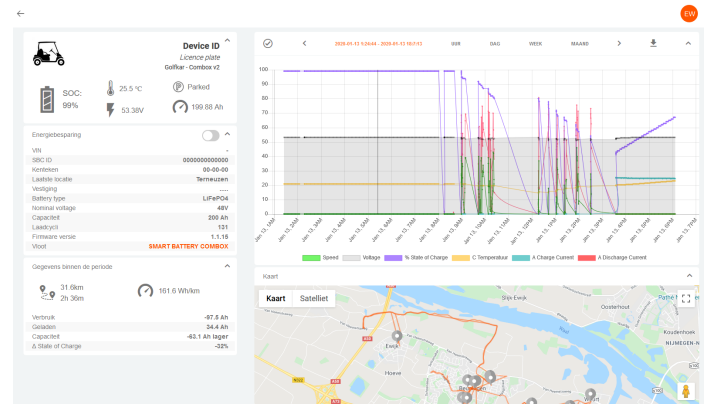
### Applications

- Black box (data recorder)
- Fleet management
- Supervision rental
- Forklift trucks
- Cleaning machines
- E-Mobility

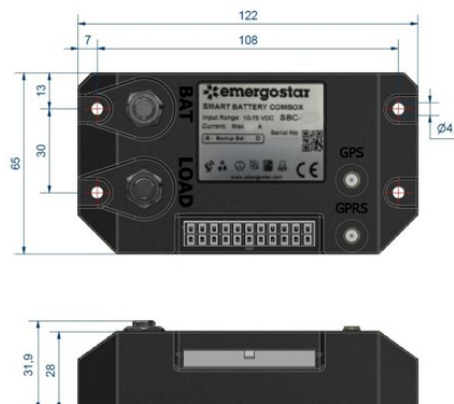


**FMS**  
FLEET MANAGEMENT  
SYSTEM

- Easy mounting
- Wide voltage range
- For all types of batteries
- Calculation of SOC and SOH
- Waterproof housing
- Interface via web and smartphone
- Options: Wi-Fi communication and battery backup



Type Combox	60A	60A Wi-Fi	150A	150A Wi-Fi	200A	200A Wi -Fi	External Shunt	External Shunt Wi-Fi	
Battery chemistry	Lead / AGM / Li-ion / LiFePO4								
Battery indication	SOC (State of Condition), by Peukert calculation ; SOH (State of Health)								
Voltage	12-75 VDC								
Max current	60A	60A	150A	150A	200A	200A	External Shunt	External Shunt	
Ingress protection	IP 65								
Memory	Data memory card 3 GB, USB connection								
Input	DI / (Key lock)								
Output	Dig out 1 Dig out 2 Analog output for Real SOC & R2G (Range2Go)								
Sensors	Gyro sensor								
	Accellero sensor								
	Temperature								
Communication	GPS	X	X	X	X	X	X	X	
	Wi-Fi		X	X	X	X		X	
Website management	GPRS ( KPN network )								
	RS232 ( Smart Battery / Speedometer )								
	SMBUS ( Smart Battery, various protocols possible ) (I <sup>2</sup> C)								
	USB (Service port)								
Optional	Information from single or fleet SBCs via web, XLS download possible								
	Wireless updates firmware SBC possible								
	Route and location information								
Subscription	Information: Dashboard for location tracking, Device ID (VIN), Device Name, GPS, SOC, voltage, telling cycles, speed, capacity, temperature, Gyro/Acc value, Real Voltage								
	Extra information with BMS: detailed battery and cells value (SOH)								
Optional	Back up battery connection								
Subscription	European connectivity via KPN Network								
Website portal	www.smartbatterycombox.nl/cms/								



 EmergoStar B.V.  
Informaticastraat 20  
4538 BT Terneuzen  
The Netherlands

 085 - 2011820

 info@emergostar.com  
www.emergostar.com

Member of Emergo Company